

RAVS

Vertical Stack Fan Coil Unit, Recessed Hi-Rise (Stand-Alone)

Quick Reference Product Catalog

MODEL

- RAVS - Vertical stack fan coil unit, recessed hi-rise (stand-alone)

FEATURES

- Galvanized steel construction
- 1/2" thick fiberglass, foil faced fiberglass, or cellular foam insulation
- Integral filter rack with 1" throwaway filter, 1" synthetic filter (MERV 6), 1" pleated filter (MERV 8), 1" pleated filter (MERV 13)
- Manual or motorized outside air damper (optional)
- Slot knockouts for Risers and Supply air knockouts
- Blower shield
- Single or double deflection discharge grille(s)
- Decorator Front panels: Recessing Frame, Perimeter intake panel, full faced aluminum grille

COILS

- Cooling - chilled water (3 or 4 rows)
- Heating - hot water reheat (1 or 2 rows)
- 5 total rows of cooling and heating coils maximum
- 3/8" O.D. seamless copper tubes (0.012" tube wall thickness)
- Stainless steel coil casing (optional)
- High efficiency aluminum fin surface
- Removable for service
- Manual air vent
- Automatic air vents (Optional)

DRAIN PANS

- Double wall, composite, anti-microbial
- Positively sloped to drain connection
- Easily removable for cleaning
- Condensate overflow switch (optional)
- 7/8" O.D. primary drain connection
- P-trap factory installed

FAN/MOTOR ASSEMBLIES

- Forwardly curved, DWDI centrifugal type
- 115, 208-230, 220 and 277V, 1-phase, 3-speed PSC motors
- 115, 208-230, 220 and 277V, 1-phase, 3-speed fixed EC motors
- 115, 208-230, 220 and 277V, 1-phase, variable Speed EC motors
- Quick disconnect motor connections
- Removable fan/motor deck for service

ELECTRICAL

- Electric reheat available
- Electrical enclosure with access door for field wiring terminations
- Terminal block for field connections
- Unit and remote mounted three speed fan switches (optional)
- SCR fan speed controller (optional)
- Main fusing (optional)



- Disconnect switch, toggle, or door interlocking (optional)
- Silent electric heat relays and fan relay (Optional)

ELECTRIC HEAT

- ETL listed as an assembly for safety compliance
- Integral electric heat assembly with removable elements for easy service
- Automatic reset primary and manual back-up secondary thermal limits
- Single point power connection

PIPING PACKAGES (OPTIONAL)

- Factory installed
- 1/2" 2-way and 3-way normally closed, two position or floating point control valves
- Modulating control valves
- High pressure close-off actuators (50 PSIG max)
- Stainless steel braided hoses (threaded swivel connections) for thermal expansion including isolation ball valves with memory stop
- Fixed and adjustable flow control devices (optional)
- Unions and P/T ports (optional)
- Analog, digital display or programmable thermostats with remote, unit or ADA mounting options

RISERS

- Type-M or L copper with swaged connections
- 3/4" to 3" diameters
- 1/2" and 3/4" closed cell insulation
- Type-M copper condensate riser
- Riser extensions
- Riser cover
- Ship in advance risers

RAVS

Vertical Stack Fan Coil Unit, Recessed Hi-Rise (Stand-Alone)

Quick Reference Product Catalog

TANDEM ARRANGEMENTS

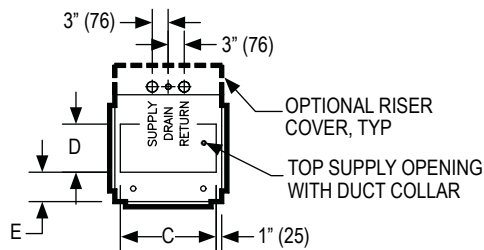
- Primary/secondary arrangements are available described as other models but similar to RAVS
- RARS - Secondary, recessed unit, ordered individually
- RARM - Primary, recessed unit, ordered individually
- RAVM/RAVL - Tandem primary and secondary units with risers and optional fire rated wall plenum (UL 1479), shipped as full assembly

CERTIFICATIONS

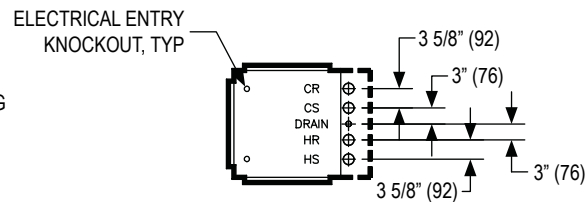
- cETL Listed Electric Heat Units - Adherence to UL 60335 certification
- AHRI 440 certified performance data

WEB SEARCH: **RAVS**

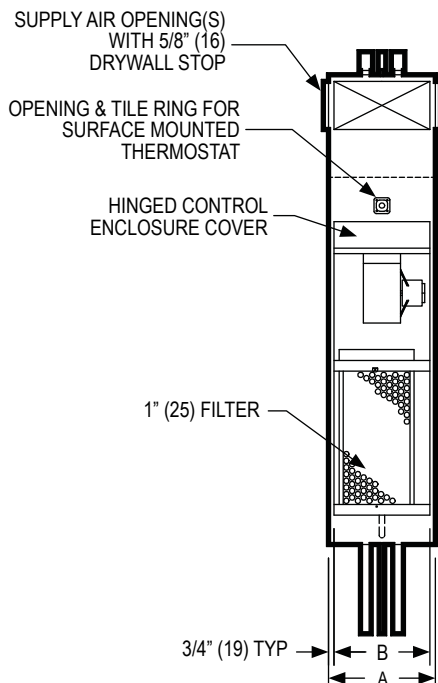
DIMENSIONAL DATA



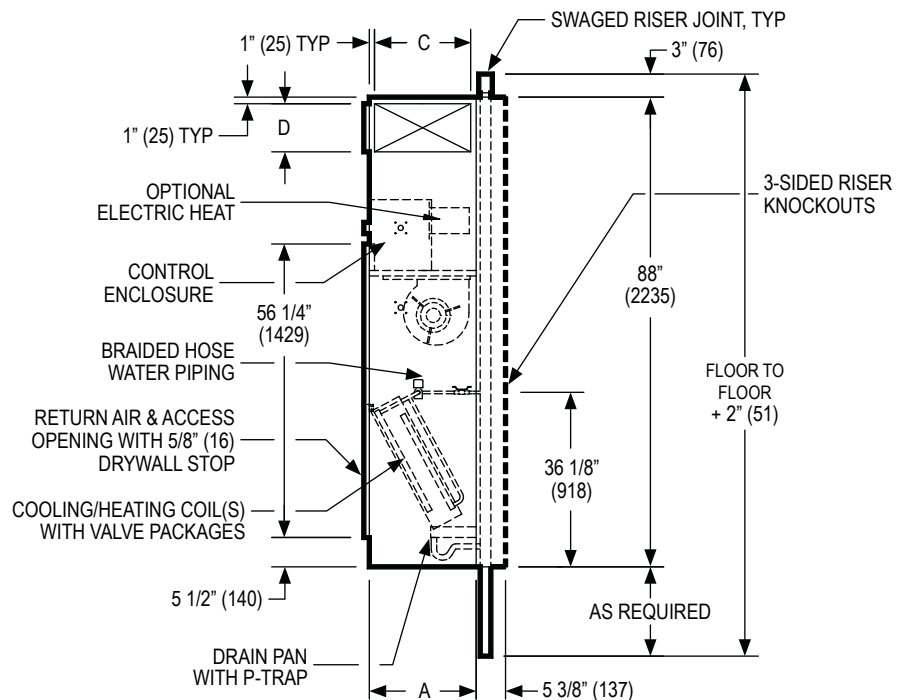
2-PIPE, TOP VIEW



4-PIPE, TOP VIEW



FRONT VIEW



SIDE VIEW

NOTES: Dimensions in parentheses are in millimeters (mm). See table below for dimensional references. Thermostat is shipped loose and may be unit surface mounted via tile ring or remote wall mounted. Back riser is shown, other locations are available.

RAVS

Vertical Stack Fan Coil Unit, Recessed Hi-Rise (Stand-Alone)

Quick Reference Product Catalog

PERFORMANCE AND DIMENSIONAL DATA

Size	Performance			Dimensions				
Unit Size	CFM Range	Total Cooling Capacity Range (MBH)	Heating Capacity Range (MBH)	A	B	Single Supply		E
						C	D	
03	330 - 337	8 - 11	21 - 31	18" (457)	16 1/2" (419)	16" (406)	8" (203)	6" (152)
04	443 - 451	11 - 14	24 - 39	18" (457)	16 1/2" (419)	16" (406)	8" (203)	6" (152)
06	557 - 577	16 - 18	32 - 33	20" (508)	18 1/2" (470)	18" (457)	12" (305)	6" (152)
08	800 - 836	19 - 24	39 - 40	20" (508)	18 1/2" (470)	18" (457)	12" (305)	6" (152)
10	911 - 960	23 - 27	53 - 82	24" (610)	22 1/2" (572)	22" (559)	14" (356)	8" (203)
12	1171 - 1206	28 - 33	61 - 62	24" (610)	22 1/2" (572)	22" (559)	14" (356)	8" (203)

NOTES: Information shown is abbreviated. See website for complete information. Data is based on 115/1/60 3-speed PSC motor on high fan speed with 0.05" ESP. Cooling coil: 75°F DB and 63°F WB EAT, 45°F EWT, 55°F LWT. Heating coil: 70°F DB EAT, 180°F EWT, 160°F LWT. CFM and coil performance ranges will vary depending on coil combination selected.